



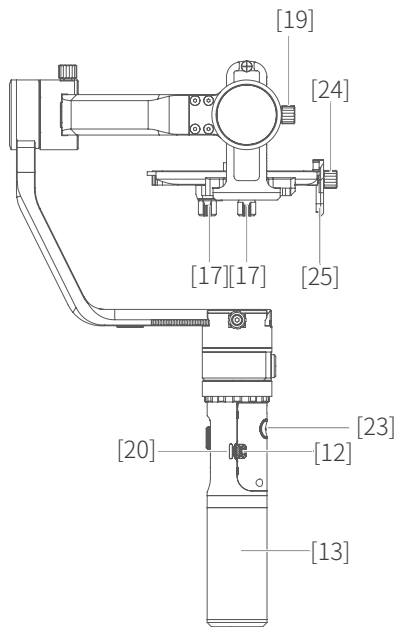
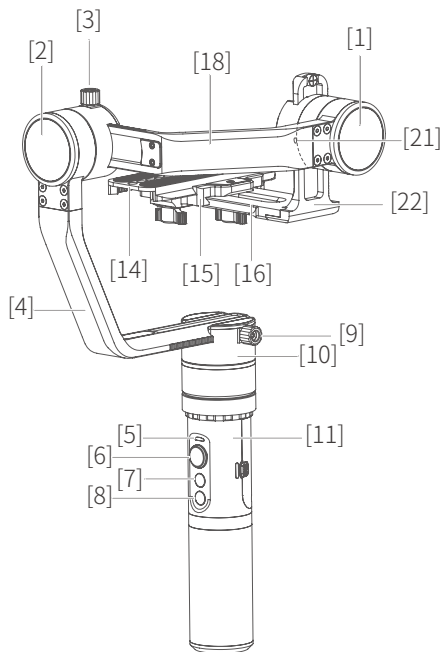
α2000

3-Axis Gimbal for Mirrorless Camera

GuiLin FeiYu Technology Incorporated Company

User Manual EN V1.0

1. Product Overview

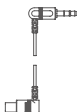


- [1] Tilting axis
- [2] Rolling axis
- [3] Rolling lock screw
- [4] Vertical arm
- [5] Indicator
- [6] Joystick
- [7] Function button
- [8] Shutter button
- [9] Panning lock screw
- [10] Panning axis
- [11] Socket connector
- [12] USB interface
- [13] Handle
- [14] Quick plate
- [15] Adjustment skateboard
- [16] Adapter(Clamping plate)
- [17] Thumb screw
- [18] Cross arm
- [19] Tilting lock screw
- [20] Charging indicator
- [21] Shutter cable socket
- [22] Sliding arm
- [23] Trigger button
- [24] Camera support frame screw
- [25] Camera support frame

Basic accessories



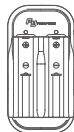
USB cable



SONY shutter line
(3.5 audio to multi)



Battery X2
(Type: 18650)



Smart charger



Thumb screw



Camera support
frame screw



Camera support
frame



Quick plate

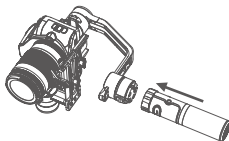


Tripod

Installation way

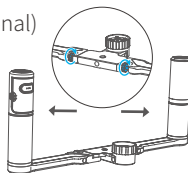
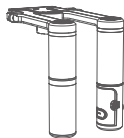
Single-armed installation

α2000 Single Handle



Dual Handheld Installation

α2000 Double-hand foldable set (Optional)



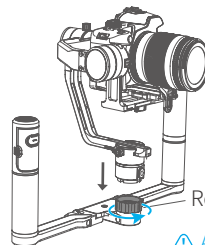
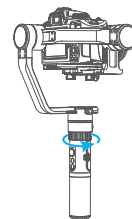
Advanced accessories (Double-hand foldable set)



1/4 screw



Code shoe



Retaining ring

⚠ After installation, please
tighten the retaining ring

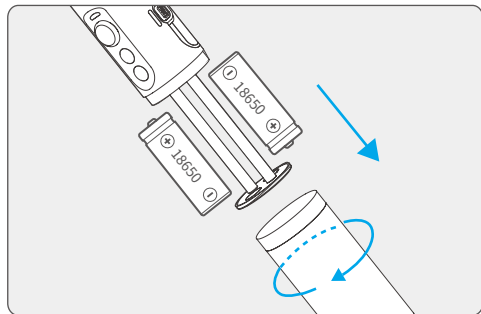
2. Installation

Attention: Please complete the following instructions before power on the gimbal

1 Insert the batteries

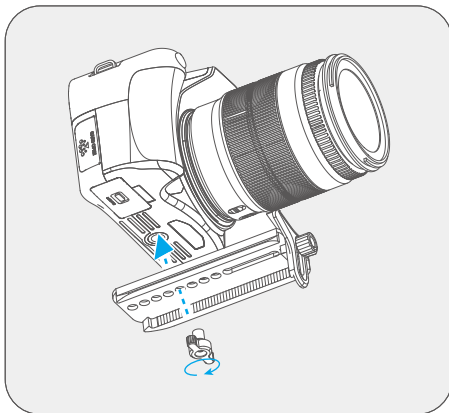
Prior to use, please be sure to fill the batteries.

Remove the handle, insert 2 pcs 18650 batteries and tighten the handle.



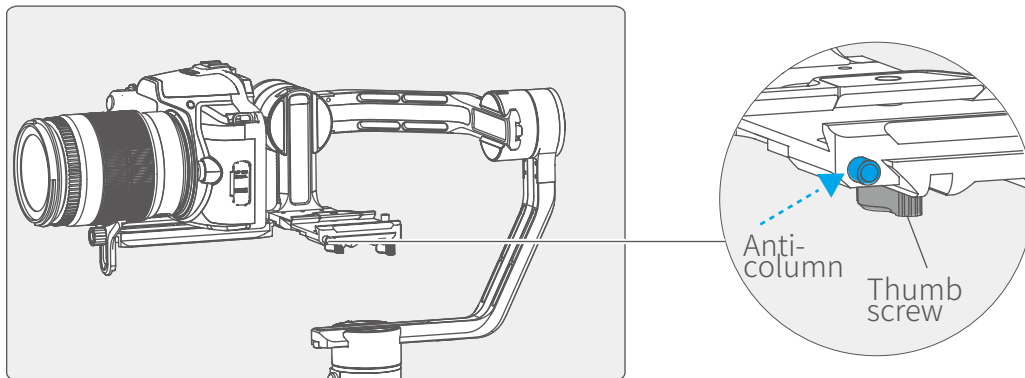
2 Installation of the camera

(1) Align the adjustment skateboard to the 1/4 screw hole at the bottom of the camera and place to the appropriate position, then tighten the screw.



*The screw is screwed into the threaded holes on the quick plate.

(2) After installing the camera, press and hold the anti-column, place the quick plate which the camera is mounted on the clamping plate, and tighten the screws.



3

Balance Adjustment

Turn on the gimbal after adjust the center of gravity balance of the three axis(see the section "[7.Balance Adjustment](#)" for details)



Note: center of gravity imbalance can lead to stable performance degradation, or even can not balance the camera.

- 4 Power on:** Long press the function button and release it until green light is on and hear the tone.
- 5 Power off:** Long press the function button and release it until red light changes from quick flashing to constant and hear the tone.

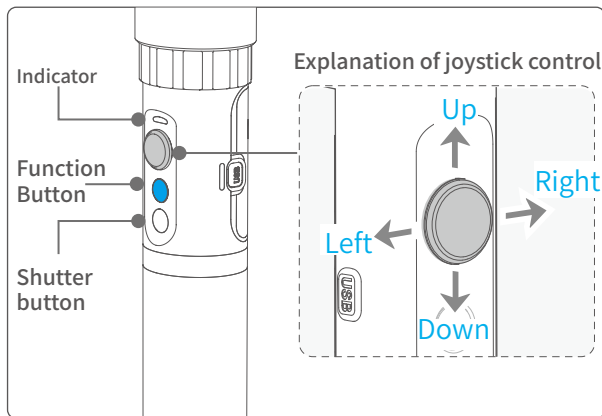
The current mode of the gimbal can be identified by the indicator status.

Explanation of LED indicator status

LED status	Mode / Status
Blue light flashes once	Panning mode
Blue light flashes twice	Panning and Tilting mode
Blue light constant on	Lock mode / Initialize the gimbal
Blue light keeps flashing	Initialization failure / Malfunction
Red light flashes three times	Low battery
Red light keeps flashing	Entering power off



In case of low battery, the indicator will light red and flash 3 times every 5 seconds. Please charge gimbal or replace the battery.



6 Modes / Functions

Working Modes

Panning Mode (Default mode)

Tilting and rolling direction are fixed, and the camera lens moves according to the hand movement of the user.

Panning and Tilting Mode

The rolling direction is fixed, and the camera lens moves according to the hand movement of the user.

Lock Mode

The orientation of the camera is fixed.

Other Functions

Reset

Return to panning mode, tilting and rolling to return to initial level

Operating Instructions of Button

Function button	Function	Explanation
Single tap	Panning mode	Single tap to switch to panning mode (Default mode)
Double tap	Panning and Tilting mode	Under panning and tilting mode, single tap to switch to panning mode
Triple tap	Rotate 180°in horizontal	Make the camera lens rotate 180 °
Quadruple tap	Autorotation Mode	Quadruple tap to enter autototation mode
Fifth tap	Initialization	Fifth tap to automatically enters initialization
Trigger button	Function	Explanation
Long press	Lock	In the panning mode or panning and pitch mode, press and hold lock shortcuts to enter the lock mode, release to return before mode
Double tap	Reset	Return to panning mode, tilting and rolling to return to initial level

Autorotation Mode

1. Quadruple tap on function button, gimbal will access the autorotation mode .
2. Set the gimbal start rotation position: Pull the tilting axis or panning axis to the start position by hand, click the function button to record.
3. Pull the gimbal (which can be rotated more than one turn) according to the rotation path you want to set, and then click the function button to record the end position again. The gimbal will go to the start position and start the automatic rotation. Gimbal autorotation function with mirrorless camera delay photography function can be used to achieve a very special mobile delay photography.

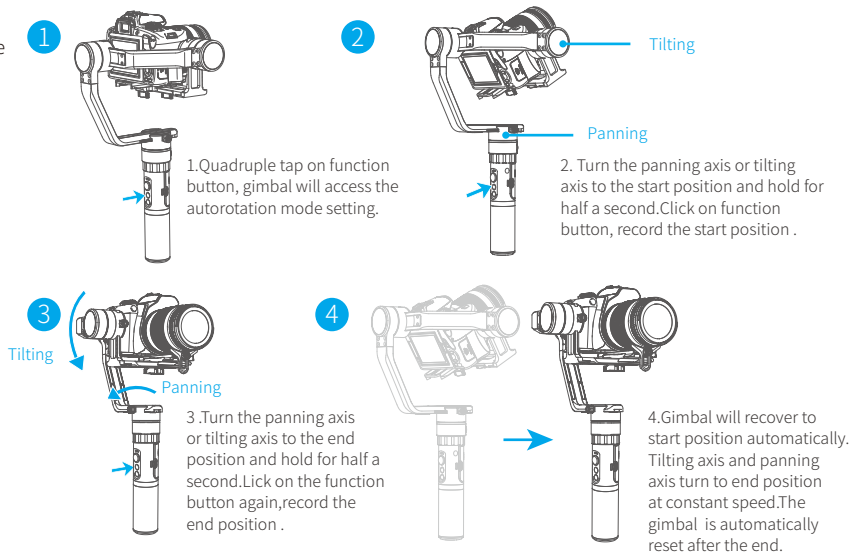
Other operations: Click the function button to exit the autorotation mode during automatic rotation. The speed setting is made by Feiyu ON App.

Note: Both the panning and tilting directions can be rotated.

Annexed parameter table:

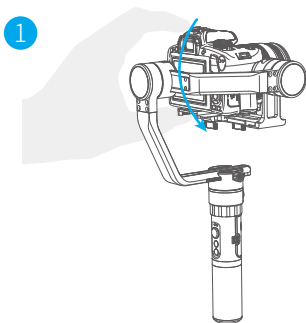
Gimbal speed setting reference table

α2000 Rotate Speed
12 seconds / turn
18 seconds / turn
24 seconds / turn
30 seconds / turn
1 minute / turn
2 minutes / turn
4 minutes / turn
8 minutes / turn
15 minutes / turn
30 minutes / turn
1 hour / turn (default)
4 hours / turn
8 hours / turn

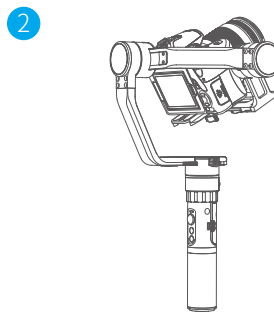


Manual Lock

Manual lock , pull to the specified angle to stay half a second can be lock the current angle.(The tilting axis and panning axis in the lock mode can be manual lock and the tilting axis can be manual lock in the panning mode.) Take the tilting axis as an example:



Hold the camera and change its angle in tilting axis direction.



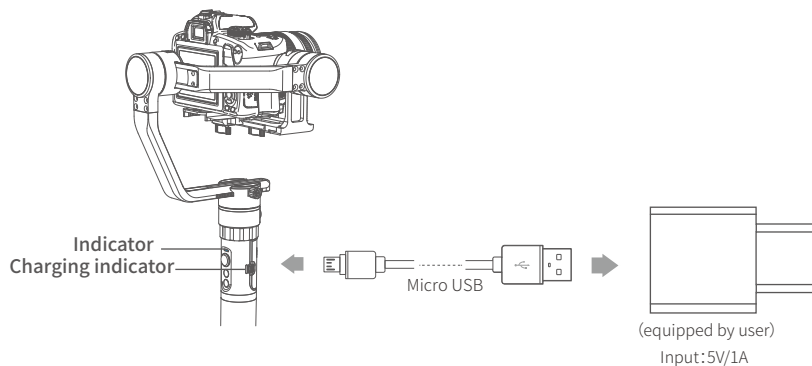
Keep this position for half second, the current angle will be locked manually.

7 Photograph

The shutter button can take pictures via the shutter line.

Click the shutter button to focus, click again within 3s to take pictures. If there is no operation within 3s, the focus state is cleared.

8 Charging



Explanation of Charging indicator status

LED status	Mode / Status
Blue light, red light off	Stop charging
The blue and red light are flashing	The voltage of two batteries balance adjustment (If the two batteries voltage difference between the larger, the process takes a long time)
The blue and red light	Charging

3. Download and connect App

1 Download "Feiyu ON" and install it.

(1) IOS version:



App Store



(2) Android version:



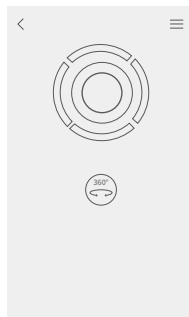
Google play



*Please scan the two-dimensional code via the browser.

2 Connecting App

Start the App on your smartphone, follow the instructions to connect the smartphone App with gimbal via bluetooth.



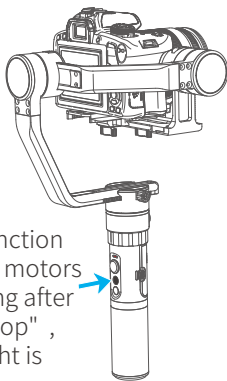
4. Gimbal initialization

You can initialize your gimbal when:

- (1) when camera is not level
- (2) if not used for a long period of time
- (3) in case of extreme temperature variations

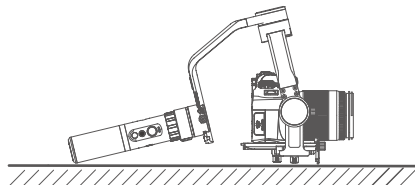
Adjusting steps:

1



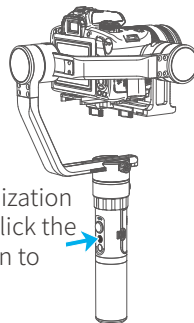
Fifth tap function button, the motors stop working after the vice "drop" , the blue light is always on

2



The gimbal still placed on the desktop, the gimbal will automatically initialization when detects the static, the blue light cycle three flash, then the initialization end.

3

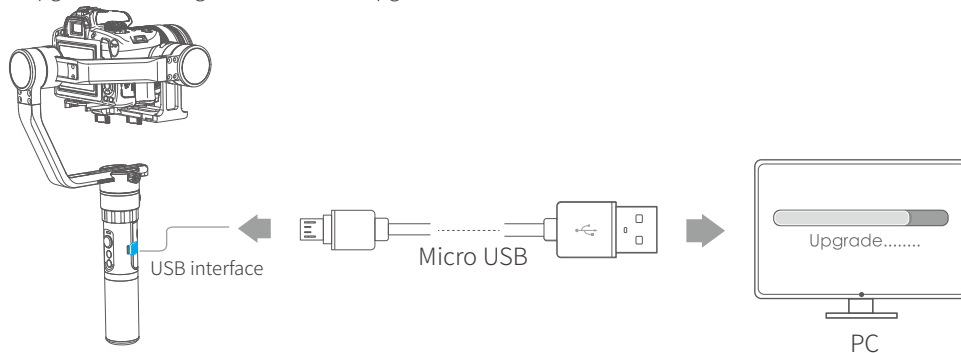


After the initialization is successful, click the function button to wake up.

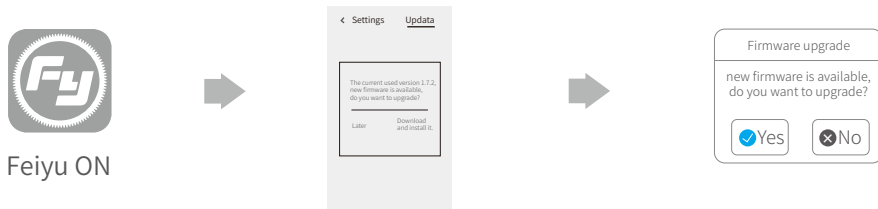
Note: If the initialization is not successful for a long time, long press the function button to turn off the gimbal, restart it and then initialize.

5. Firmware Upgrade

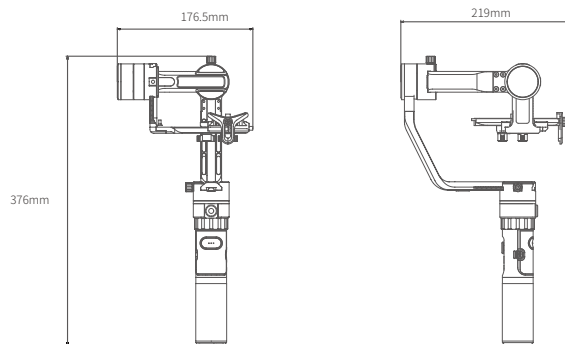
(1) Option 1: Connect the gimbal with PC via micro USB cable, and then upgrade the firmware.
Please visit the official website www.feiyu-tech.com to download the relevant software for upgrading, including USB driver, firmware upgrade software and product firmware, and install the relevant software, decompress the firmware files .
Firmware upgrade according to the firmware upgrade instructions.



(2) Option 2: Connect the gimbal with smartphone App via bluetooth, and then upgrade the firmware.



6. Parameters



Titling Angle	360°
Rolling Angle	360°
Panning Angle	360°
Tilting Increments	2°/s ~ 75°/s
Panning Increments	3°/s ~ 150°/s
Life Time	10 Hours (Center of gravity balance)
Load weight	250g~2000g
Adaption	Sony NEX-5N/NEX-7 and other N-series, SONY A7RII / ILCE-7R / ILCE-5100, Panasonic LUMIX GH4, Canon 5D Mark III (with standard lens), and other cameras with similar dimensions with weight less 2000g (The camera weight including the accessories of lens and ect.)
Weight	720g(Not including the accessories of batteries, camera, camera lens and ect.)

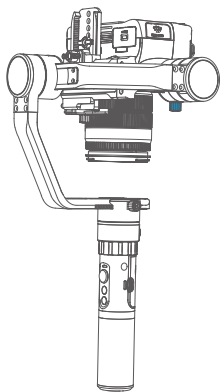
7. Balance Adjustment

STEP 1 Balance adjustment of the tilting axis

Adjust the center of gravity of the camera in two steps to the axis of rotation of the tilting axis.

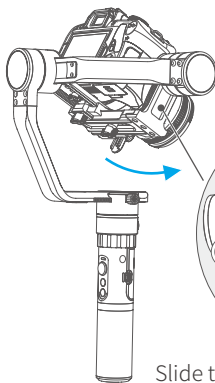
- (1) Adjust the center of gravity position of the tilting axis up and down: let the camera lens vertical down, hand arm to maintain the level, as shown in figure ①, let go and observe the state of rotation. Adjust the balance via adjust the sliding arm up and down . (Refer to figure ② ③)

* After adjustment, be sure to tighten the lock screw.



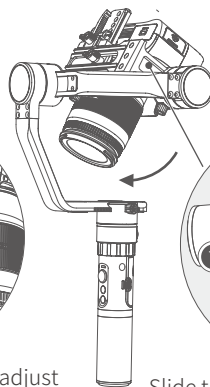
Normal vertical

①



Camera forward

②



Camera backward

③

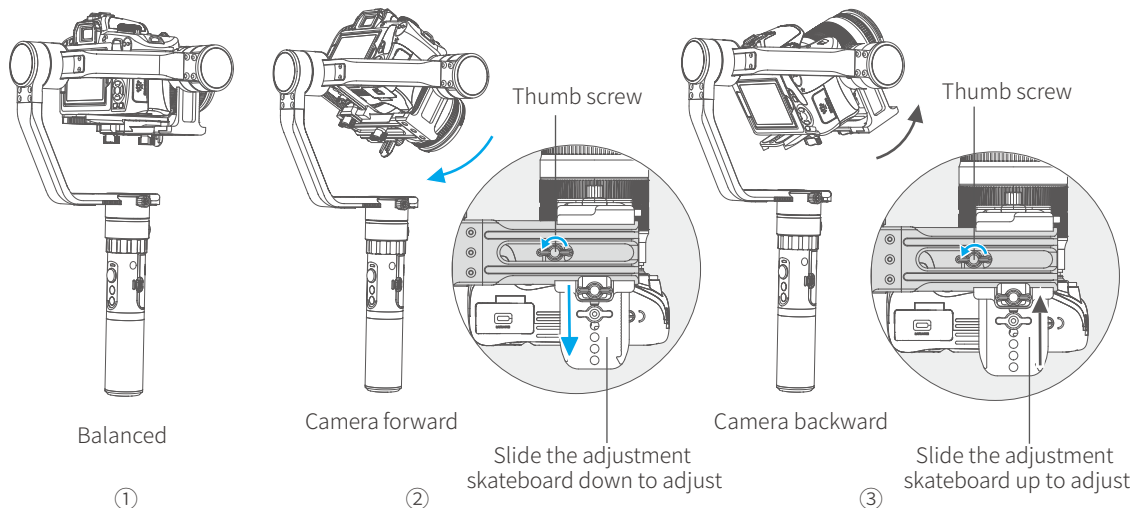
Slide the sliding arm up to adjust

Slide the sliding arm down to adjust

- (2) Adjust the center of gravity position of the tilting axis forward and backward: let the camera lens horizontal forward, hand arm to maintain the level, as shown in figure ①, let go and observe the state of rotation.

Loosen the screw on the bottom of the camera and adjust the balance by slide the adjustment skateboard to up and down at the bottom of the camera.(Refer to Figure ② ③)

* After adjustment, be sure to tighten the lock screw.

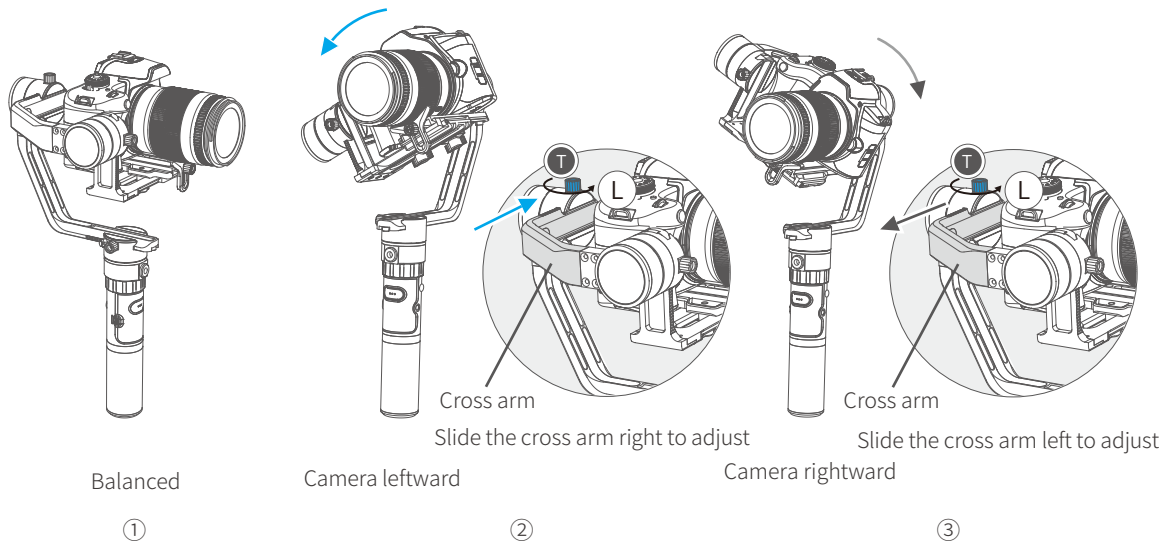


STEP 2 Balance adjustment of the rolling axis

When the balance adjustment of tilting axis and rolling axis is completed, the balance of the panning axis can be adjusted. Keep the gimbal socket connector with the horizontal ground, Hand-held panning axis as shown in figure ①, let the arm in the natural state, observe the camera tilt state.

Loosen the lock screw on the rolling and slide the cross arm left and right to adjust. (Refer to figure ② ③)

* After adjustment, be sure to tighten the lock screw.

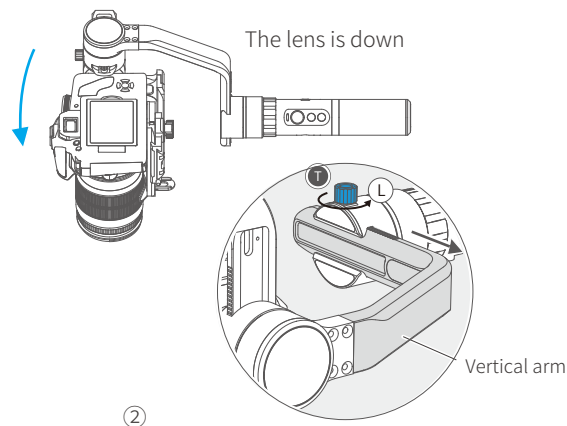
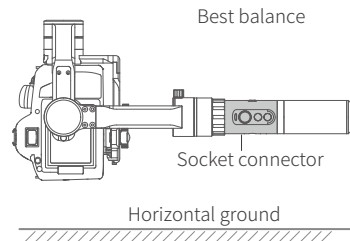


STEP 3 Balance adjustment of the panning axis

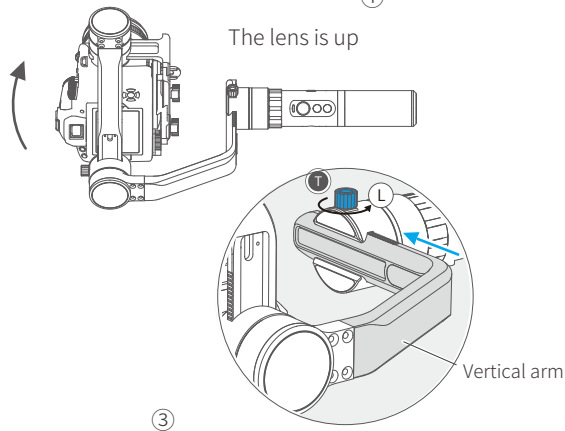
When the balance adjustment of tilting axis and rolling axis is completed, the balance of the panning axis can be adjusted. Keep the gimbal socket connector with the horizontal ground, Hand-held panning axis as shown in figure ①, et go and observe the state of rotation.

Loosen the lock screw on the panning and slide the vertical arm forward and backward to adjust (Refer to figure ② ③)

* After adjustment, be sure to tighten the lock screw



Slide the vertical arm backward to adjust



Slide the vertical arm forward to adjust

DISCLAIMER

Prohibit any user for any illegal purpose. Users will be responsible for all behaviors of purchase and use products.

The Company assumes no liability for any risks related to or resulting from the debug and use of this product (including the direct, indirect or third-party losses).

For any unknown sources of using, we will not be at any services.

The updating and changes of product firmware and program may cause changes in function descriptions in this user manual, please read the instructions carefully before upgrading the firmware and use the corresponding user manual.

You can get the latest user manual from the official website: www.feiyu-tech.com

Feiyu Tech reserves the right to amend this manual and the terms and conditions of use the gimbal at any time.

Attention

- Please correctly assemble the gimbal in accordance with the diagram.
- Please install the phone before powering on the gimbal.
- When the gimbal is not in use or placed on the table, please ensure it is powered off.
- Remove the battery when not in use for a long time.

GuiLin FeiYu Technology Incorporated Company

Website: www.feiyu-tech.com

E-mail: service@feiyu-tech.com

Tel: +86 (0)773 2320866

Due to software and hardware improvements, your actual product might differ from the descriptions and pictures in this user manual. You can get the latest user manual from the official website.

For more information, please visit our official website

